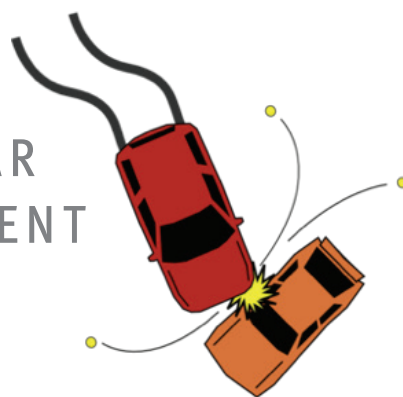


WHICH EMERGENCY SERVICE?

Cut these scenarios out and sort them according to which emergency service would be needed (police, fire or ambulance). Some may require more than one service.



THE LIBRARY
IS ON FIRE



A CAR
ACCIDENT

SOMEONE HAS
TAKEN CLOTHES
FROM A SHOP
WITHOUT
PAYING



SOMEONE HAS
FALLEN OFF A
LADDER



A CHEMICAL
SPILL

A CHILD IS
LOST



Show us a picture of you doing your activity sheet
using the hashtag #daisyactivities



WHICH EMERGENCY SERVICE?

Discussion points for parents and carers:

You could ask the children to add some scenarios of their own.

They can use props/costumes/figures etc.

Discuss medical scenarios that wouldn't be classed as emergencies requiring an ambulance...where can we go for these?

Give chance to share experiences.